

Copy of Barossa Series® Aluminium Batten Screens

Louvreclad Barossa Series® aluminium battens offer customizable profiles for vertical and horizontal spans. Durable, non-combustible, and available in various finishes, ideal for privacy and sun screening.

Features

PERFORMANCE

Durable and Compliant

Non-combustible aluminium battens compliant to AS1530.1 & AS1530.3, designed to withstand various weather conditions and meet local wind pressures and standards.

AESTHETICS

Customisable Design

Extruded aluminium profiles available in powder-coated, anodised, or timber-look finishes. Battens can be set at any angle or pitch to match your design intent.

DESIGN

Versatile Application

Suitable for horizontal, vertical, and custom-angled orientations. Concealed fixing methods create contemporary screens offering privacy and sun shading.

Specifications

AUSTRALIAN STANDARDS

AS1170

ORIENTATION

Horizontal
Vertical
Diagonal

MATERIAL

Aluminium

FINISH

Interpon powder coated range, Dulux powder coated range, Timber Grain Powdercoat range, Sapphire anodised range, Universal anodised range, AAF anodised range

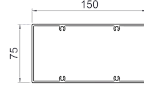
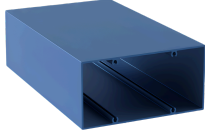
INSTALLATION

Installation and mounting details will be designed in accordance with proprietary systems and recommendations as designed and manufactured by Louvreclad.

Explore the profile options

Barossa Series® 150x75

150x75 aluminium batten system for customized cladding



75 mm
DEPTH

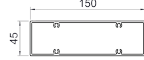
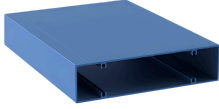
2.65Kg/Lm
WEIGHT

150 mm
THICKNESS

5200 mm
MAX SPAN

Barossa Series® 150x45

150x45 aluminium batten system for customized cladding



45 mm
DEPTH

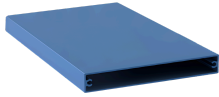
2.3Kg/Lm
WEIGHT

150 mm
THICKNESS

3600 mm
MAX SPAN

Barossa Series® 150x20

150x20 aluminium batten system for customized cladding



20 mm
DEPTH

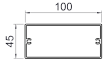
1.6Kg/Lm
WEIGHT

150 mm
THICKNESS

1800 mm
MAX SPAN

Barossa Series® 100x45

100x45 aluminium batten system for customized cladding



45 mm
DEPTH

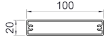
1.8Kg/Lm
WEIGHT

100 mm
THICKNESS

3700 mm
MAX SPAN

Barossa Series® 100x20

100x20 aluminium batten system for customized cladding



20 mm
DEPTH

1.15Kg/Lm
WEIGHT

100 mm
THICKNESS

1800 mm
MAX SPAN

Barossa Series® 75x75

75x75 aluminium batten system for customized cladding



75 mm
DEPTH

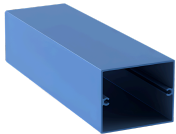
1.4Kg/Lm
WEIGHT

75 mm
THICKNESS

4900 mm
MAX SPAN

Barossa Series® 75x60

75x60 aluminium batten system for customized cladding



60 mm
DEPTH

1.3Kg/Lm
WEIGHT

75 mm
THICKNESS

4150 mm
MAX SPAN

Barossa Series® 75x45

75x45 aluminium batten system
for customized cladding



45 mm

DEPTH

1.15Kg/Lm

WEIGHT

75 mm

THICKNESS

3350 mm

MAX SPAN

Barossa Series® 75x20

75x20 aluminium batten system
for customized cladding



20 mm

DEPTH

0.9Kg/Lm

WEIGHT

75 mm

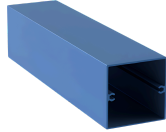
THICKNESS

1850 mm

MAX SPAN

Barossa Series® 60x60

60x60 aluminium batten system
for customized cladding



60 mm

DEPTH

1.15Kg/Lm

WEIGHT

60 mm

THICKNESS

4200 mm

MAX SPAN

Barossa Series® 60x45

60x45 aluminium batten system
for customized cladding



45 mm

DEPTH

1.1Kg/Lm

WEIGHT

60 mm

THICKNESS

3400 mm

MAX SPAN

Barossa Series® 60x20

60x20 aluminium batten system
for customized cladding



20 mm

DEPTH

0.8Kg/Lm

WEIGHT

60 mm

THICKNESS

1850 mm

MAX SPAN

Barossa Series® 45x45

45x45 aluminium batten system
for customized cladding



45 mm

DEPTH

0.9Kg/Lm

WEIGHT

45 mm

THICKNESS

3450 mm

MAX SPAN

Barossa Series® 45x20

45x20 aluminium batten system
for customized cladding



20 mm

DEPTH

0.67Kg/Lm

WEIGHT

45 mm

THICKNESS

1875 mm

MAX SPAN

Technical Data Disclaimer

- Indicative maximum span provided are based on generic permissible design wind pressure of 2kPa.
- Span values and product technical information provided are subjected to variance by project specific requirements & influence factors such building location, terrain category & local pressure effects.
- Span values provided are based on typical scenario where product specified are fixed at one end; simply supported at the other end and in either horizontal or vertical orientation.
- If the product specified is required to function as barrier for fall protection or as trafficable element, maximum span and pitch nominated may be reduced.
- Spans values provided could be influenced and reduced when used in dynamically sensitive wind environment.
- For project specific product selection or preliminary design & engineering consultation, please contact 1300 165 678 or sales@louvreclad.com to arrange or book a meeting.





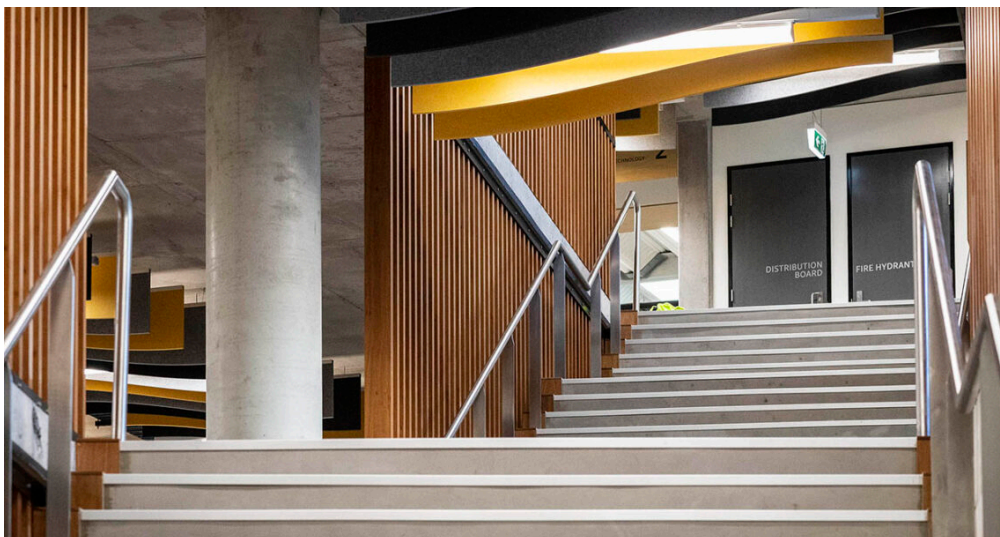
Inspire with Quality

As leaders in the building envelope market, we are known for exceptional quality and lasting value. Our credibility, wealth of knowledge, and unmatched competence enable us to inspire exterior solutions that look good and perform better.



The MadeRight Guarantee

Following our proven process enables us to develop solutions we're proud to put our mark of quality to. We guarantee that all projects will be delivered in a timely manner, be on specification, engineered to Australian standards and finished to the highest quality.



Made to Perform

Louvreclad solutions are made to last and manufactured on-site using high-quality Australian aluminium and steel. As an organisation we are driven to get a thousand things right everyday to achieve our vision to be the face of Australian Building. Our facades are not here to be average, they are here to perform – and so are we.

Technical Data Disclaimer



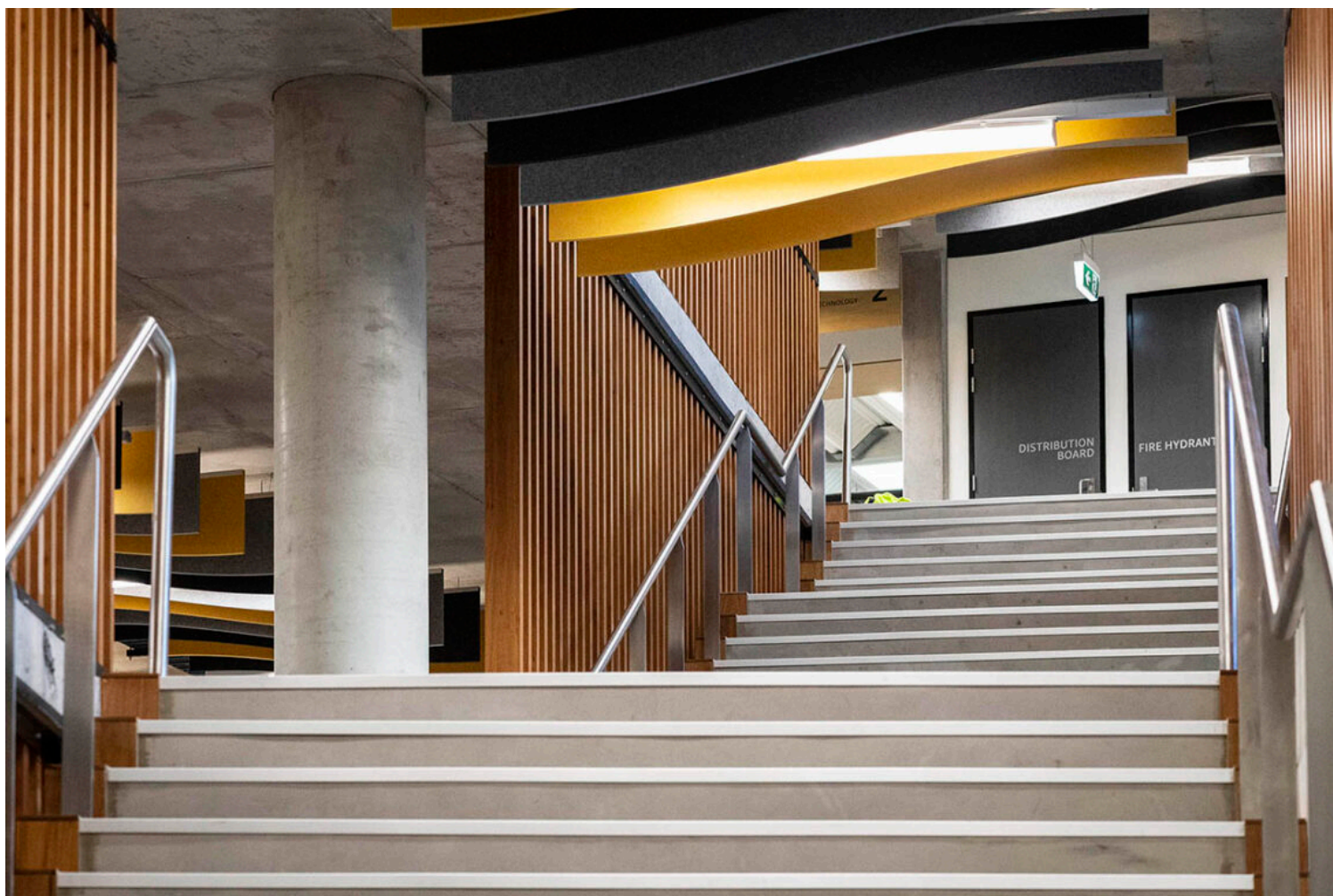
Made to Perform

1300 165 678

sales@louvreclad.com

louvreclad.com

- Indicative maximum span provided are based on generic permissible design wind pressure of 2kPa.
- Span values and product technical information provided are subjected to variance by project specific requirements & influence factors such building location, terrain category & local pressure effects.
- Span values provided are based on typical scenario where product specified are fixed at one end; simply supported at the other end and in either horizontal or vertical orientation.
- If the product specified is required to function as barrier for fall protection or as trafficable element, maximum span and pitch nominated may be reduced.
- Spans values provided could be influenced and reduced when used in dynamically sensitive wind environment.
- For project specific product selection or preliminary design & engineering consultation, please contact 1300 165 678 or sales@louvreclad.com to arrange or book a meeting.



Inspire with Quality

As leaders in the building envelope market, we are known for exceptional quality and lasting value. Our credibility, wealth of knowledge, and unmatched competence enable us to inspire exterior solutions that look good and perform better.



The MadeRight Guarantee

Following our proven process enables us to develop solutions we're proud to put our mark of quality to. We guarantee that all projects will be delivered in a timely manner, be on specification, engineered to Australian standards and finished to the highest quality.



Made to Perform

1300 165 678

sales@louvreclad.com

louvreclad.com



Speak to an expert

Reach out today to discuss your facade solution requirements; we would love to hear from you.



Made to Perform

1300 165 678

sales@louvreclad.com

louvreclad.com