

# Altura Series® Chevron Vertical Louvres

The Louvreclad Altura Series® are extruded aluminium vertical chevron louvres engineered for high performance. They are well-suited for commercial plant room enclosures that demand maximum airflow, effective rain defence, and zero-vision screening.

## Features

### PERFORMANCE

#### High Airflow & Rain Defence

Achieves up to Class B 98% rain defence with Class 1 aerodynamics. 145mm and 300mm louvres offer 60%-80% free open area, ideal for high ventilation needs.

### AESTHETICS

#### Vertical Linear Aesthetic

Zero vision screening with 145mm and 300mm chevron louvres. Available in powder-coated or anodised finishes, assembled as panels or continuous louvres.

### DESIGN

#### Customisable Configuration

Engineered for large plant screens, with 62.5mm and 100mm blade pitches. Certified to AS/NZS 4740 and AS/NZS 1170, supporting spans up to 1700mm and lengths up to 6000mm.

## Specifications

### AUSTRALIAN STANDARDS

Performance tested to AS/NZS 4740:2000

### ORIENTATION

Vertical

### MATERIAL

6060 T5 Extruded Aluminium

### FINISH

Powder coated or anodised

### ACCESSORIES

Bird/vermin mesh Insect mesh  
Blanking sheets Dust filters  
Security screens and bars  
Integrated louvred doors

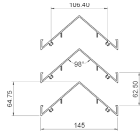
### INSTALLATION

Installation and mounting details will be designed in accordance with proprietary systems and recommendations as designed and manufactured by Louvreclad.

Explore the profile options

Altura Series®  
145

Zero vision, extruded aluminium vertical chevron louvres



**Class 1**  
AERODYNAMICS

**0.714 CD**  
DISCHARGE COEFFICIENT

**0.31 m2**  
EFFECTIVE AERODYNAMIC AREA

**Class B**  
RAIN RESISTANCE

**96 %**  
EFFECTIVE RAIN RESISTANCE

**60 %**  
FREE OPEN AREA

**145 mm**  
DEPTH

**Variable mm**  
WIDTH

**62.5 mm**  
PITCH

**3600 mm**  
MAX SPAN

**24kg/m2**  
WEIGHT

**Vertical**  
ORIENTATION

Altura Series®  
300

Zero vision, extruded aluminium vertical chevron louvres



**Class 1**  
AERODYNAMICS

**0.725 CD**  
DISCHARGE COEFFICIENT

**0.47 m2**  
EFFECTIVE AERODYNAMIC AREA

**Class B**  
RAIN RESISTANCE

**98 %**  
EFFECTIVE RAIN RESISTANCE

**80 %**  
FREE OPEN AREA

**300 mm**  
DEPTH

**Variable mm**  
WIDTH

**100 mm**  
PITCH

**1800 mm**  
MAX SPAN

**28kg/m2**  
WEIGHT

**Vertical**  
ORIENTATION

# AS 4740 Rain Resistance

## Altura Series® 145

Rain penetration classification at each core velocity.

Ventilator core velocity (m/2)	0	0.5	1	1.5	2	2.5	3	3.5
Effectiveness E (%)	100%	100%	100%	98%	98%	95%	94%	87%
Classification	Class A	Class A	Class A	Class B	Class B	Class B	Class C	Class C

The results concluded the ventilator has fair rain defence performance at the core velocities from 0-3.5m/s as summarised in the table above. The average rain penetration effectiveness for this model was 96% in Class B rating.

## Altura Series® 300

Rain penetration classification at each core velocity.

Ventilator core velocity (m/2)	0	0.5	1	1.5	2	2.5	3	3.5
Effectiveness E (%)	100%	100%	100%	100%	100%	100%	95%	91%
Classification	Class A	Class A	Class A	Class A	Class A	Class A	Class B	Class C

The results concluded the ventilator has fair rain defense performance at the core velocities from 0-3.5m/s s summarised in the table above. The average rain penetration effectiveness for this model was 98% in Class B rating.

## Technical Data Disclaimer

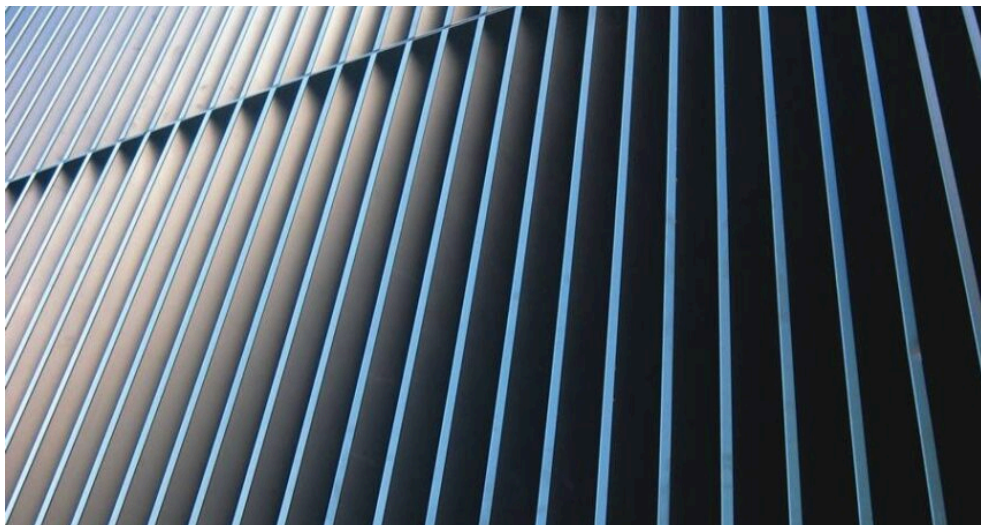
- Indicative maximum span provided are based on generic permissible design wind pressure of 2kPa.
- Span values and product technical information provided are subjected to variance by project specific requirements & influence factors such building location, terrain category & local pressure effects.
- Span values provided are based on typical scenario where product specified are fixed at one end; simply supported at the other end and in either horizontal or vertical orientation.
- If the product specified is required to function as barrier for fall protection or as trafficable element, maximum span and pitch nominated may be reduced.
- Spans values provided could be influenced and reduced when used in dynamically sensitive wind environment.
- This product is not tested to NCC Performance Requirements FP1.1 (rainwater management) and FP1.4 (weatherproofing).

For project specific product selection or preliminary design & engineering consultation, please contact 1300 165 678 or [sales@louvrecad.com](mailto:sales@louvrecad.com) to arrange or book a meeting.



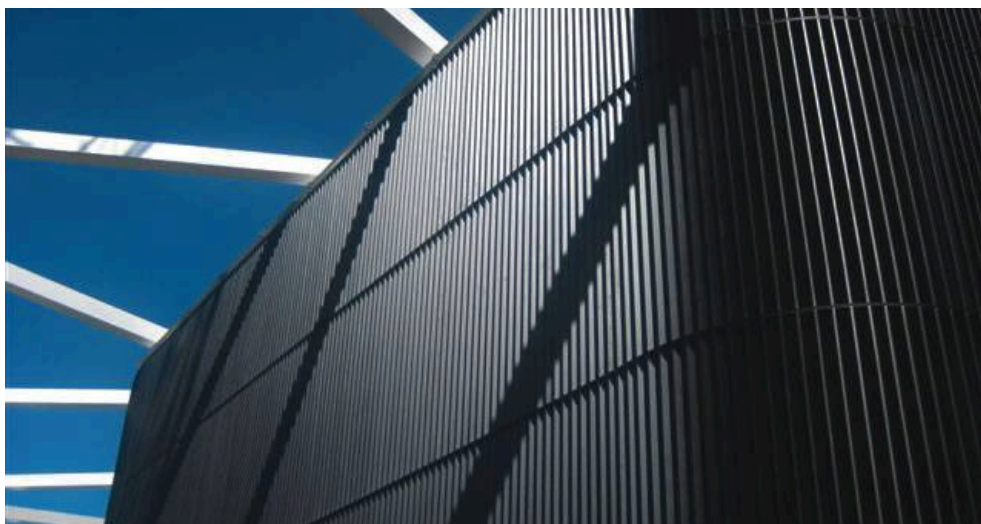
## Inspire with Quality

As leaders in the building envelope market, we are known for exceptional quality and lasting value. Our credibility, wealth of knowledge, and unmatched competence enable us to inspire exterior solutions that look good and perform better.



## The MadeRight Guarantee

Following our proven process enables us to develop solutions we're proud to put our mark of quality to. We guarantee that all projects will be delivered in a timely manner, be on specification, engineered to Australian standards and finished to the highest quality.



## Made to Perform

Louvreclad solutions are made to last and manufactured on-site using high-quality Australian aluminium and steel. As an organisation we are driven to get a thousand things right everyday to achieve our vision to be the face of Australian Building. Our facades are not here to be average, they are here to perform – and so are we.

# Speak to an expert

Reach out today to discuss your facade solution requirements; we would love to hear from you.



Made to Perform

1300 165 678

[sales@louvrecld.com](mailto:sales@louvrecld.com)

[louvrecld.com](http://louvrecld.com)