

Ascot Series® Bespoke Sun Shades

Louvreclad Ascot Series® is a custom-fabricated sun blade solution with solid aluminium cladding. Ideal for large spans without visible supports, perfect for bespoke window hoods and sun blades.

Features

PERFORMANCE

Durable and Compliant

Custom-engineered aluminium sun blades, certified non-combustible (AS1530.1 & AS1530.3), designed to meet local wind pressures and relevant Australian Standards.

AESTHETICS

Elegant Design Options

Available in standard and custom widths, with options for mitred or tapered panels. Powder-coated or anodised finishes provide a sleek, polished look.

DESIGN

Versatile and Robust

Suitable for horizontal or vertical mounting, featuring a robust aluminium frame. Maximum blade span of 4.8m, perfect for large, unsupported spans.

Specifications

ORIENTATION

Horizontal
Vertical

MATERIAL

Aluminium sub-structure clad in aluminium sheet

FINISH

Interpon powder coated range,
Dulux powder coated range,
Timber Grain Powdercoat range,
Sapphire anodised range,
Universal anodised range, AAF
anodised range

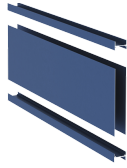
INSTALLATION

Installation and mounting details will be designed in accordance with proprietary systems and recommendations as designed and manufactured by Louvreclad.

Explore the profile options

Ascot Series®

Custom-fabricated
1270mm deep sun blade



1270 mm
DEPTH

88 mm
THICKNESS

Horizontal, Vertical
ORIENTATION

Technical Data Disclaimer

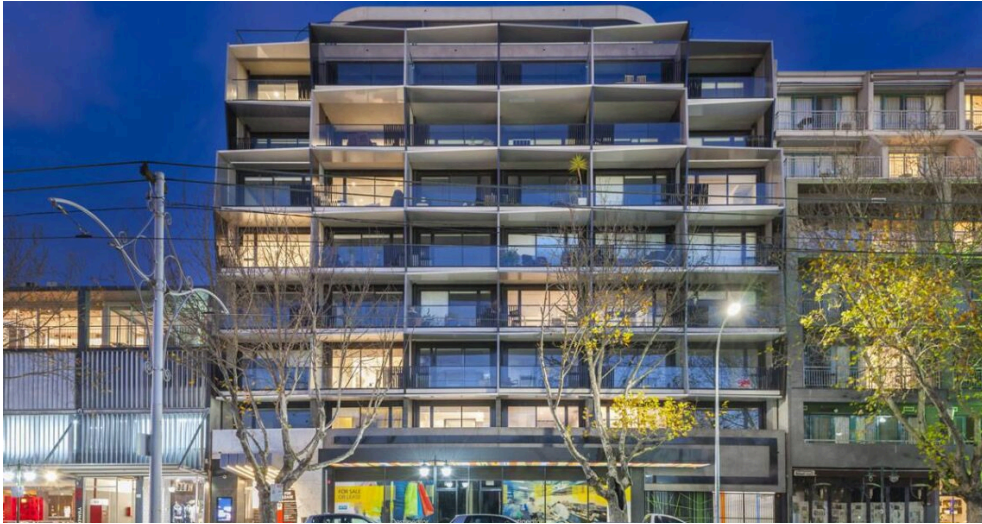
- Indicative maximum span provided are based on generic permissible design wind pressure of 2kPa.
- Span values and product technical information provided are subjected to variance by project specific requirements & influence factors such building location, terrain category & local pressure effects.
- Span values provided are based on typical scenario where product specified are fixed at one end; simply supported at the other end and in either horizontal or vertical orientation.
- If the product specified is required to function as barrier for fall protection or as trafficable element, maximum span and pitch nominated may be reduced.
- Spans values provided could be influenced and reduced when used in dynamically sensitive wind environment.
- For project specific product selection or preliminary design & engineering consultation, please contact 1300 165 678 or sales@louvreclad.com to arrange or book a meeting.





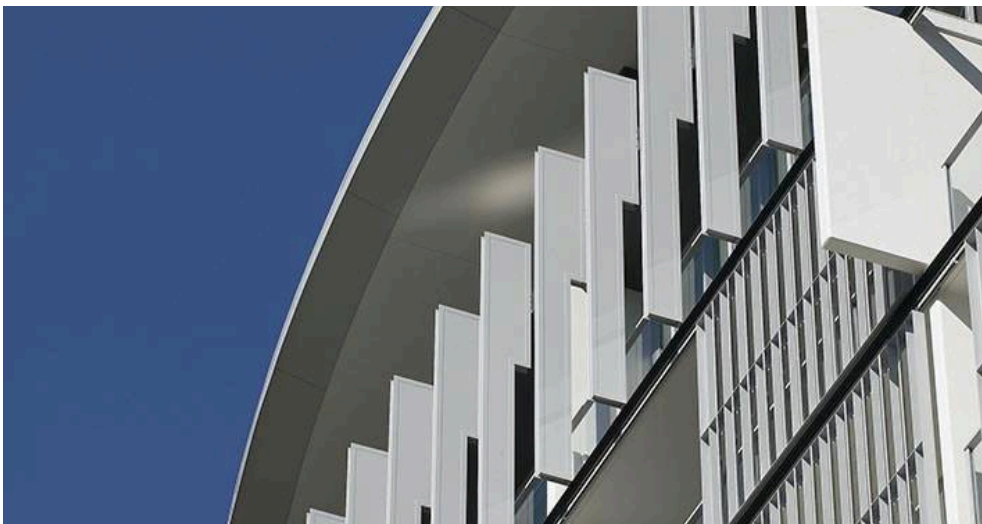
Inspire with Quality

As leaders in the building envelope market, we are known for exceptional quality and lasting value. Our credibility, wealth of knowledge, and unmatched competence enable us to inspire exterior solutions that look good and perform better.



The MadeRight Guarantee

Following our proven process enables us to develop solutions we're proud to put our mark of quality to. We guarantee that all projects will be delivered in a timely manner, be on specification, engineered to Australian standards and finished to the highest quality.



Made to Perform

Louvreclad solutions are made to last and manufactured on-site using high-quality Australian aluminium and steel. As an organisation we are driven to get a thousand things right everyday to achieve our vision to be the face of Australian Building. Our facades are not here to be average, they are here to perform – and so are we.

Speak to an expert

Reach out today to discuss your facade solution requirements; we would love to hear from you.



Made to Perform

1300 165 678

sales@louvreclad.com

louvreclad.com

