

# Barossa Series® Aluminium Batten Screens

Louvreclad Barossa Series® aluminium battens offer customizable profiles for vertical and horizontal spans. Durable, non-combustible, and available in various finishes, ideal for privacy and sun screening.

## Features

### PERFORMANCE

#### Durable and Compliant

Non-combustible aluminium battens tested to AS1530.1 & AS1530.3, designed to withstand various weather conditions and meet local wind pressures and standards.

### AESTHETICS

#### Customisable Design

Extruded aluminium profiles available in powder-coated, anodised, or timber-look finishes. Battens can be set at any angle or pitch to match your design intent.

### DESIGN

#### Versatile Application

Suitable for horizontal, vertical, and custom-angled orientations. Concealed fixing methods create contemporary screens offering privacy and sun shading.

## Specifications

### AUSTRALIAN STANDARDS

AS1170

### ORIENTATION

Horizontal  
Vertical  
Diagonal

### MATERIAL

Aluminium

### FINISH

Interpon powder coated range,  
Dulux powder coated range,  
Timber Grain Powdercoat range,  
Sapphire anodised range,  
Universal anodised range, AAF  
anodised range

### INSTALLATION

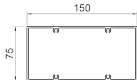
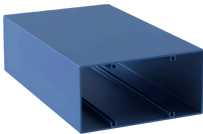
Installation and mounting details will be designed in accordance with proprietary systems and recommendations as designed and manufactured by Louvreclad.

# Explore the profile options

Barossa Series®

150x75

150x75 aluminium batten system for customized cladding



75 mm

DEPTH

150 mm

THICKNESS

5200 mm

MAX SPAN

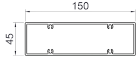
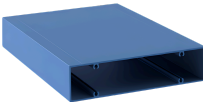
2.65Kg/Lm

WEIGHT

Barossa Series®

150x45

150x45 aluminium batten system for customized cladding



45 mm

DEPTH

150 mm

THICKNESS

3600 mm

MAX SPAN


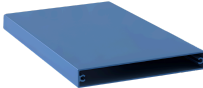
2.3Kg/Lm

WEIGHT

Barossa Series®

150x20

150x20 aluminium batten system for customized cladding



20 mm

DEPTH

150 mm

THICKNESS

1800 mm

MAX SPAN


1.6Kg/Lm

WEIGHT

Barossa Series®

100x45

100x45 aluminium batten system for customized cladding



45 mm

DEPTH

100 mm

THICKNESS

3700 mm

MAX SPAN

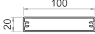
1.8Kg/Lm

WEIGHT

Barossa Series®

100x20

100x20 aluminium batten system for customized cladding



20 mm

DEPTH

100 mm

THICKNESS

1800 mm

MAX SPAN

1.15Kg/Lm

WEIGHT

**Barossa Series®**  
**75x75**

75x75 aluminium batten  
system for customized  
cladding



**75 mm**  
DEPTH

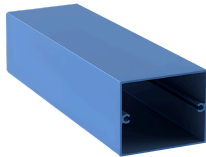
**1.4Kg/Lm**  
WEIGHT

**75 mm**  
THICKNESS

**4900 mm**  
MAX SPAN

**Barossa Series®**  
**75x60**

75x60 aluminium batten  
system for customized  
cladding



**60 mm**  
DEPTH

**1.3Kg/Lm**  
WEIGHT

**75 mm**  
THICKNESS

**4150 mm**  
MAX SPAN

**Barossa Series®**  
**75x45**

75x45 aluminium batten  
system for customized  
cladding



**45 mm**  
DEPTH

**1.15Kg/Lm**  
WEIGHT

**75 mm**  
THICKNESS

**3350 mm**  
MAX SPAN

**Barossa Series®**  
**75x20**

75x20 aluminium batten  
system for customized  
cladding



**20 mm**  
DEPTH

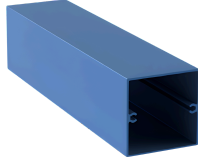
**0.9Kg/Lm**  
WEIGHT

**75 mm**  
THICKNESS

**1850 mm**  
MAX SPAN

**Barossa Series®**  
**60x60**

60x60 aluminium batten  
system for customized  
cladding



**60 mm**  
DEPTH

**1.15Kg/Lm**  
WEIGHT

**60 mm**  
THICKNESS

**4200 mm**  
MAX SPAN

**Barossa Series®**  
**60x45**

60x45 aluminium batten  
system for customized  
cladding

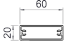


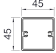
**45 mm**  
DEPTH

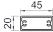
**1.1Kg/Lm**  
WEIGHT

**60 mm**  
THICKNESS

**3400 mm**  
MAX SPAN

<b>Barossa Series®</b> <b>60x20</b>  60x20 aluminium batten system for customized cladding		<b>20 mm</b> DEPTH	<b>60 mm</b> THICKNESS	<b>1850 mm</b> MAX SPAN
		<b>0.8Kg/Lm</b> WEIGHT		

<b>Barossa Series®</b> <b>45x45</b>  45x45 aluminium batten system for customized cladding		<b>45 mm</b> DEPTH	<b>45 mm</b> THICKNESS	<b>3450 mm</b> MAX SPAN
		<b>0.9Kg/Lm</b> WEIGHT		

<b>Barossa Series®</b> <b>45x20</b>  45x20 aluminium batten system for customized cladding		<b>20 mm</b> DEPTH	<b>45 mm</b> THICKNESS	<b>1875 mm</b> MAX SPAN
		<b>0.67Kg/Lm</b> WEIGHT		

## Technical Data Disclaimer

- Indicative maximum span provided are based on generic permissible design wind pressure of 2kPa.
- Span values and product technical information provided are subjected to variance by project specific requirements & influence factors such building location, terrain category & local pressure effects.
- Span values provided are based on typical scenario where product specified are fixed at one end; simply supported at the other end and in either horizontal or vertical orientation.
- If the product specified is required to function as barrier for fall protection or as trafficable element, maximum span and pitch nominated may be reduced.
- Spans values provided could be influenced and reduced when used in dynamically sensitive wind environment.
- For project specific product selection or preliminary design & engineering consultation, please contact 1300 165 678 or [sales@louvreclad.com](mailto:sales@louvreclad.com) to arrange or book a meeting.





## Inspire with Quality

As leaders in the building envelope market, we are known for exceptional quality and lasting value. Our credibility, wealth of knowledge, and unmatched competence enable us to inspire exterior solutions that look good and perform better.



## The MadeRight Guarantee

Following our proven process enables us to develop solutions we're proud to put our mark of quality to. We guarantee that all projects will be delivered in a timely manner, be on specification, engineered to Australian standards and finished to the highest quality.



## Made to Perform

Louvreclad solutions are made to last and manufactured on-site using high-quality Australian aluminium and steel. As an organisation we are driven to get a thousand things right everyday to achieve our vision to be the face of Australian Building. Our facades are not here to be average, they are here to perform – and so are we.

# Speak to an expert

Reach out today to discuss your facade solution requirements; we would love to hear from you.



Made to Perform

1300 165 678

[sales@louvreciad.com](mailto:sales@louvreciad.com)

[louvreciad.com](http://louvreciad.com)