

Merlin Series® Elliptical Louvre Blades

Louvreclad Merlin Series® 430mm aluminium elliptical louvres offer exceptional spanning and cantilevering for high-rise buildings. Ideal for floor-to-floor screening, they can be operable with sun and lux sensors for energy efficiency.

Features

PERFORMANCE

Ultimate Cantilevering

430x55mm extruded aluminium elliptical louvres provide excellent spanning capabilities. Designed for operable or fixed shading solutions, enhancing energy efficiency and occupant comfort.

AESTHETICS

Bold Architectural Design

Offers a sleek, elliptical profile for vertical or horizontal installation. Concealed mounting methods ensure a clean line aesthetic, suitable for high-rise buildings.

DESIGN

Versatile and Robust

Suitable for vertical, horizontal, and operable configurations. Variable blade pitch and angle with a maximum vertical span of 4000mm, available in powder-coated or anodised finishes.

Specifications

INSTALLATION

Installation and mounting details will be designed in accordance with proprietary systems and recommendations as designed and manufactured by Louvreclad.

Explore the profile options

Merlin Series®

430x55mm aluminium
elliptical blades



430 mm

DEPTH

55 mm

THICKNESS

4100 mm

MAX SPAN

3.49 kg/metre

WEIGHT

Technical Data Disclaimer

- Indicative maximum span provided are based on generic permissible design wind pressure of 2kPa.
- Span values and product technical information provided are subjected to variance by project specific requirements & influence factors such building location, terrain category & local pressure effects.
- Span values provided are based on typical scenario where product specified are fixed at one end; simply supported at the other end and in either horizontal or vertical orientation.
- If the product specified is required to function as barrier for fall protection or as trafficable element, maximum span and pitch nominated may be reduced.
- Spans values provided could be influenced and reduced when used in dynamically sensitive wind environment.
- For project specific product selection or preliminary design & engineering consultation, please contact 1300 165 678 or sales@louvreclad.com to arrange or book a meeting.



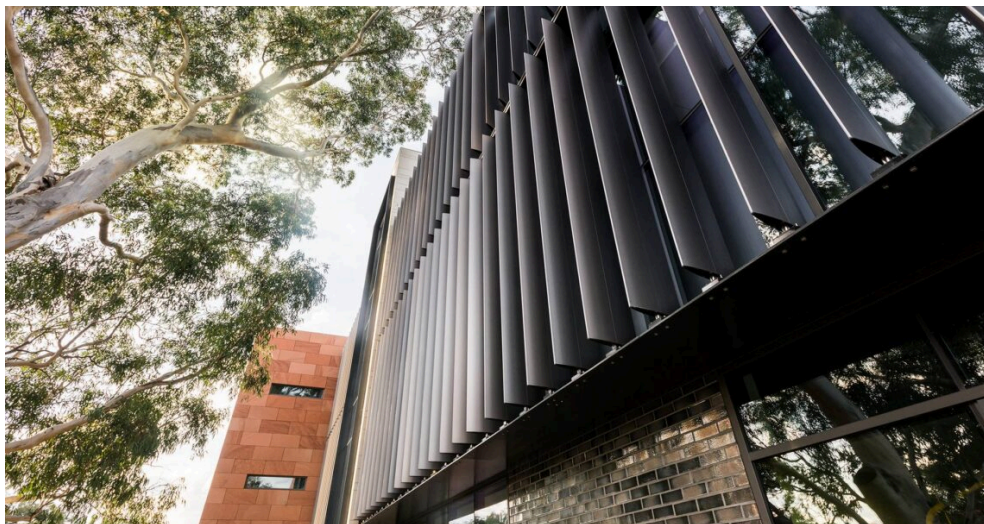
Inspire with Quality

As leaders in the building envelope market, we are known for exceptional quality and lasting value. Our credibility, wealth of knowledge, and unmatched competence enable us to inspire exterior solutions that look good and perform better.



The MadeRight Guarantee

Following our proven process enables us to develop solutions we're proud to put our mark of quality to. We guarantee that all projects will be delivered in a timely manner, be on specification, engineered to Australian standards and finished to the highest quality.



Made to Perform

Louvreclad solutions are made to last and manufactured on-site using high-quality Australian aluminium and steel. As an organisation we are driven to get a thousand things right everyday to achieve our vision to be the face of Australian Building. Our facades are not here to be average, they are here to perform – and so are we.

Speak to an expert

Reach out today to discuss your facade solution requirements; we would love to hear from you.



Made to Perform

1300 165 678

sales@louvrecld.com

louvrecld.com