

Ocean Series® Elliptical Louvre

Louvreclad Ocean Series® 300x50mm aluminium elliptical louvres span up to 3.6m for vertical shading. Suitable for indoor or outdoor use, they can be operable with sun, weather, and lux sensors for optimal conditions.

Features

PERFORMANCE

Exceptional Shading

The 300mm deep elliptical louvre system provides superior sun protection, reducing energy loads while making a bold architectural statement.

AESTHETICS

Sleek Elliptical Design

Offers a modern and versatile look with variable blade pitch and angle. Available in powder-coated or anodised finishes, suitable for both vertical and horizontal installations.

DESIGN

Adaptable and Operable

Engineered for spans up to 3.6m in vertical configuration. Can be connected to sun, weather, and lux sensors for optimal internal conditions, providing a flexible design solution.

Specifications

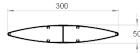
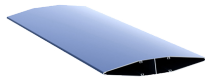
INSTALLATION

Installation and mounting details will be designed in accordance with proprietary systems and recommendations as designed and manufactured by Louvreclad.

Explore the profile options

Ocean Series®

300x50mm aluminium
elliptical blades



300 mm

DEPTH

50 mm

THICKNESS

3800 mm

MAX SPAN

4.74 kg/metre

WEIGHT

Technical Data Disclaimer

- Indicative maximum span provided are based on generic permissible design wind pressure of 2kPa.
- Span values and product technical information provided are subjected to variance by project specific requirements & influence factors such building location, terrain category & local pressure effects.
- Span values provided are based on typical scenario where product specified are fixed at one end; simply supported at the other end and in either horizontal or vertical orientation.
- If the product specified is required to function as barrier for fall protection or as trafficable element, maximum span and pitch nominated may be reduced.
- Spans values provided could be influenced and reduced when used in dynamically sensitive wind environment.
- For project specific product selection or preliminary design & engineering consultation, please contact 1300 165 678 or sales@louvreclad.com to arrange or book a meeting.



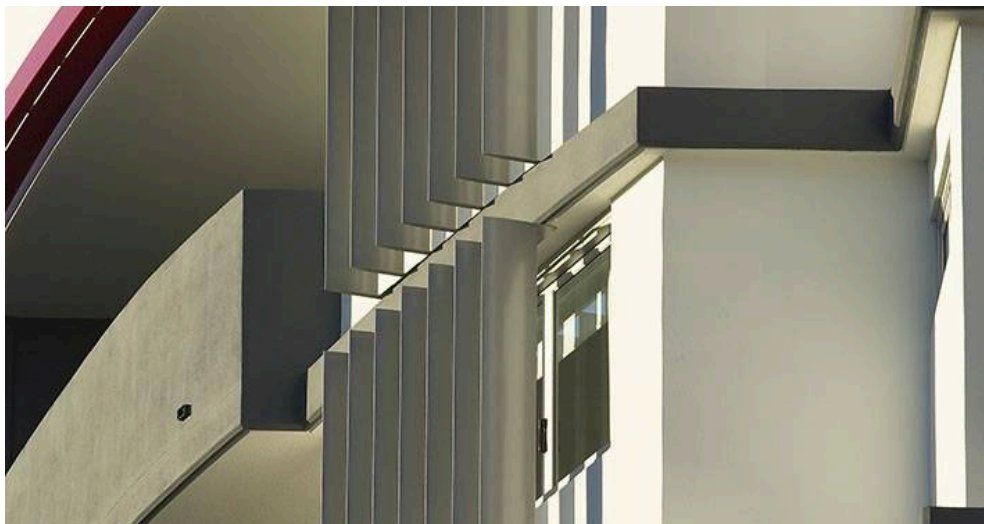
Inspire with Quality

As leaders in the building envelope market, we are known for exceptional quality and lasting value. Our credibility, wealth of knowledge, and unmatched competence enable us to inspire exterior solutions that look good and perform better.



The MadeRight Guarantee

Following our proven process enables us to develop solutions we're proud to put our mark of quality to. We guarantee that all projects will be delivered in a timely manner, be on specification, engineered to Australian standards and finished to the highest quality.



Made to Perform

Louvreclad solutions are made to last and manufactured on-site using high-quality Australian aluminium and steel. As an organisation we are driven to get a thousand things right everyday to achieve our vision to be the face of Australian Building. Our facades are not here to be average, they are here to perform – and so are we.

Speak to an expert

Reach out today to discuss your facade solution requirements; we would love to hear from you.



Made to Perform

1300 165 678

sales@louvrecld.com

louvrecld.com