

# Oxford Series® External Louvres

Louvreclad Oxford Series® 150x29mm aluminium louvres offer streamlined fixed or operable solar shading. Ideal for vertical and horizontal screening, perfect for commercial window awnings.

## Features

### PERFORMANCE

#### Optimal Sun Shading

150x29mm elliptical aluminium louvres provide excellent shading with variable blade pitch and angle, ensuring maximum sun protection and energy efficiency.

### AESTHETICS

#### Streamlined Design

Features a sleek, ellipsoid profile suitable for vertical and horizontal installations. Available in powder-coated or anodised finishes, enhancing any architectural facade.

### DESIGN

#### Versatile and Robust

Suitable for fixed or operable configurations, making it adaptable for various shading and screening applications.

## Specifications

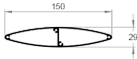
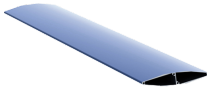
### INSTALLATION

Installation and mounting details will be designed in accordance with proprietary systems and recommendations as designed and manufactured by Louvreclad.

# Explore the profile options

## Oxford Series®

150x29mm aluminium  
elliptical blades



150 mm  
DEPTH

29 mm  
THICKNESS

2350 mm  
MAX SPAN

1.56 kg/metre  
WEIGHT



**DAY  
DESIGN****PRESSURE DROP  
TEST CERTIFICATE****Test 4203K-P****Test Specimen:****Oxford Series Louvre**

Face Velocity (m/s)	Pressure Drop (Pa)
0.5	0.8
1.0	3.0
1.5	6.5
2.0	11.5
2.5	17.7
3.0	25.3
3.5	34.1
4.0	44.3
4.5	55.8
5.0	68.5

**Test Specimen Dimensions:**

1800 mm (H) x 1200 mm (W) x 106 mm (D)

**Specimen Specifications:**

48% Open Area per Module

Blades @ 110 mm Pitch &amp; 45° angle

Throat Height @ 55 mm

**Test Location:**

Twin Reverberation Rooms

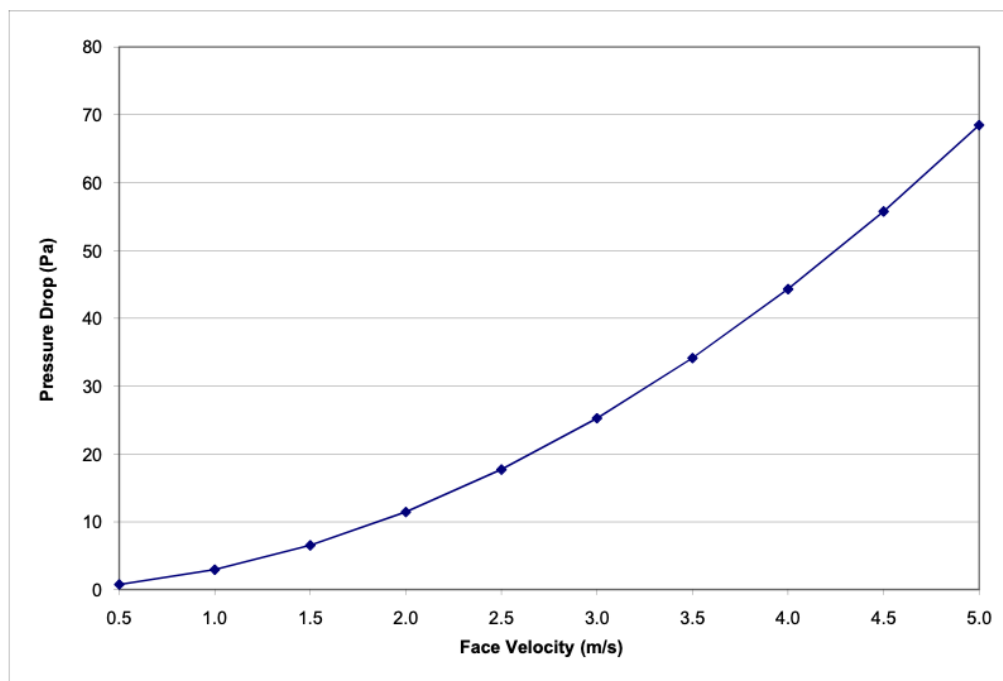
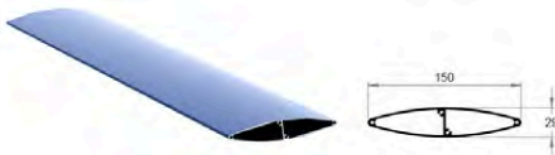
National Acoustic Laboratories

126 Greville Street, Chatswood NSW

**Instrumentation:**

- Vaisala Digital Barometer (Type PTB201AD)

- Kestrel Anemometer (Model K2000)



**Date of Test:** Wednesday, 19 August 2009  
**Project Number:** 4203K-P

**Test Engineer:** Alex Li, BE(Mech) Hons  
 For and on behalf of Day Design Pty Ltd



Made to Perform

1300 165 678

sales@louvrecad.com

louvrecad.com

## Technical Data Disclaimer

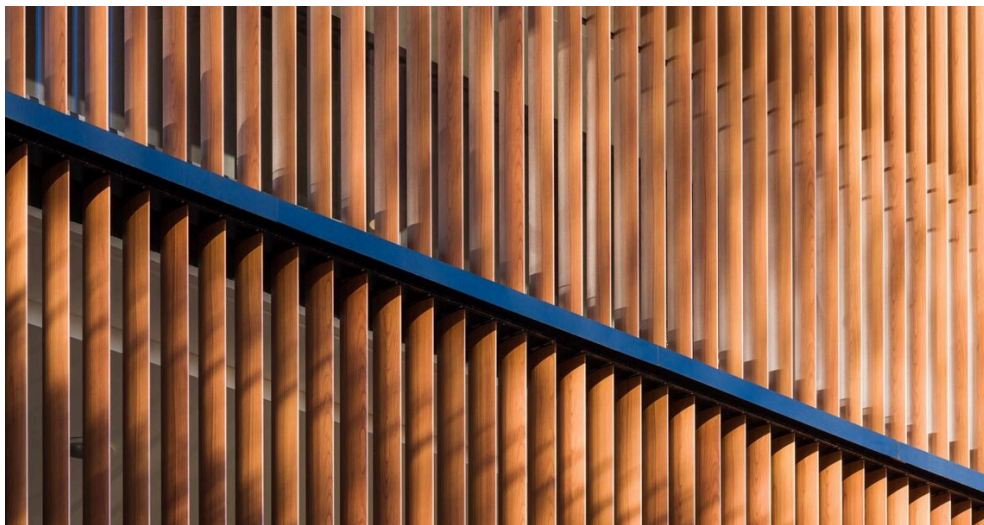
- Indicative maximum span provided are based on generic permissible design wind pressure of 2kPa.
- Span values and product technical information provided are subjected to variance by project specific requirements & influence factors such building location, terrain category & local pressure effects.
- Span values provided are based on typical scenario where product specified are fixed at one end; simply supported at the other end and in either horizontal or vertical orientation.
- If the product specified is required to function as barrier for fall protection or as trafficable element, maximum span and pitch nominated may be reduced.
- Spans values provided could be influenced and reduced when used in dynamically sensitive wind environment.
- For project specific product selection or preliminary design & engineering consultation, please contact 1300 165 678 or [sales@louvreclad.com](mailto:sales@louvreclad.com) to arrange or book a meeting.





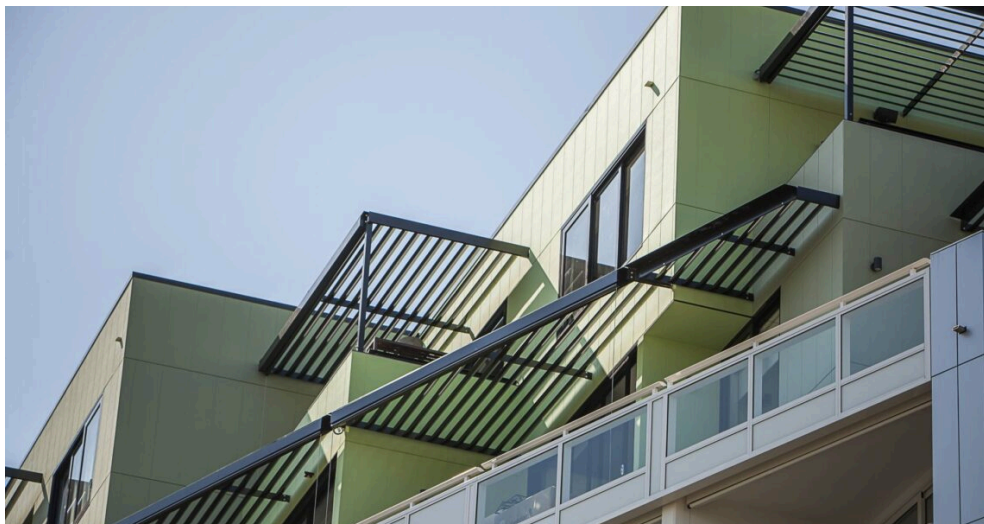
## Inspire with Quality

As leaders in the building envelope market, we are known for exceptional quality and lasting value. Our credibility, wealth of knowledge, and unmatched competence enable us to inspire exterior solutions that look good and perform better.



## The MadeRight Guarantee

Following our proven process enables us to develop solutions we're proud to put our mark of quality to. We guarantee that all projects will be delivered in a timely manner, be on specification, engineered to Australian standards and finished to the highest quality.



## Made to Perform

Louvreclad solutions are made to last and manufactured on-site using high-quality Australian aluminium and steel. As an organisation we are driven to get a thousand things right everyday to achieve our vision to be the face of Australian Building. Our facades are not here to be average, they are here to perform – and so are we.

# Speak to an expert

Reach out today to discuss your facade solution requirements; we would love to hear from you.



Made to Perform

1300 165 678

[sales@louvrecld.com](mailto:sales@louvrecld.com)

[louvrecld.com](http://louvrecld.com)