

# Polaris Series® Perforated Metal Screens

Louvreclad Polaris Series® perforated aluminium screens offer custom designs with filtered light and sun protection. These screens can feature laser-cut patterns, bespoke framing, and concealed fixings for a striking, low-maintenance facade.

## Features

### PERFORMANCE

#### Durable and Customisable

Manufactured from 3mm-6mm aluminium plates, Polaris Series® perforated screens offer non-combustible, corrosion-resistant, and low-maintenance solutions for various architectural applications.

### AESTHETICS

#### Striking Design

Custom cut, folded, and laser-punched to suit unique design intents, these screens provide filtered natural light and sun protection, enhancing any building facade with bespoke patterns.

### DESIGN

#### Versatile Application

Suitable for fixed or operable shading panels, bi-folding screens, and architectural facades. Compatible with Platinum and Ascot Series® for cohesive, seamless integration.

## Specifications

### AUSTRALIAN STANDARDS

AS 1170

### MATERIAL

Aluminium available in various grades to suit the finish

### FINISH

Interpon powder coated range,  
Dulux powder coated range,  
Sapphire anodised range,  
Universal anodised range, AAF  
anodised range

### INSTALLATION

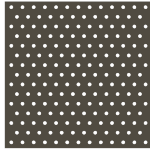
Installation and mounting details will be designed in accordance with proprietary systems and recommendations as designed and manufactured by Louvreclad.

## Explore the profile options

---

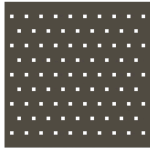
### **Polaris Series® Round**

Custom folded and  
fabricated perforated  
aluminium screens in a  
round shape



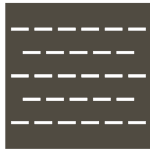
### **Polaris Series® Square**

Custom folded and  
fabricated perforated  
aluminium screens in a  
square shape



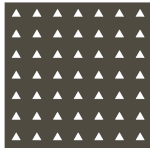
### **Polaris Series® Rectangle**

Custom folded and  
fabricated perforated  
aluminium screens in a  
rectangular shape



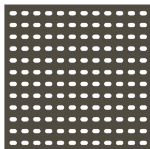
### **Polaris Series® Triangle**

Custom folded and  
fabricated perforated  
aluminium screens in a  
triangular shape



### **Polaris Series® Obround**

Custom folded and  
fabricated perforated  
aluminium screens in an  
obround shape



## Technical Data Disclaimer

- Indicative maximum span provided are based on generic permissible design wind pressure of 2kPa.
- Span values and product technical information provided are subjected to variance by project specific requirements & influence factors such building location, terrain category & local pressure effects.
- Span values provided are based on typical scenario where product specified are fixed at one end; simply supported at the other end and in either horizontal or vertical orientation.
- If the product specified is required to function as barrier for fall protection or as trafficable element, maximum span and pitch nominated may be reduced.
- Spans values provided could be influenced and reduced when used in dynamically sensitive wind environment.
- For project specific product selection or preliminary design & engineering consultation, please contact 1300 165 678 or [sales@louvreclad.com](mailto:sales@louvreclad.com) to arrange or book a meeting.



## DRAFT SPECIFICATION

Screens will be Louvreclad Polaris Series® (state pattern code number)

• FULL DRAFT SPECIFICATION AVAILABLE ON REQUEST

### Base Material & Finish

Sunscreens will be manufactured in (powder-coated/anodised) aluminium finish in (state colour).

### Installation and Mounting

Installation and mounting details will be designed in accordance with proprietary systems and recommendations as designed and manufactured by Louvreclad. Phone: 1300 165 678 Email: sales@louvreclad.com

### Finishes Available

Choose from the following range of finishes:

• Complete powder-coated range

### Base Material Options

• Aluminium

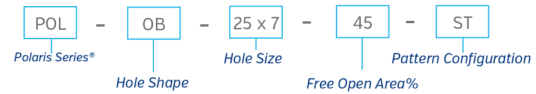
## Legend:

Shape	Shape code	Hole Size
Round	RO	
Square	SQ	
Rectangle	RE	
Triangle	TR	
Obround	OB	
Hexagonal	HE	

Open area %	Open area % code
10	10
20	20
30	30
35	35
40	40
45	45
50	50

Pattern Configuration	Pattern Configuration Code
Staggered	ST
Square Pattern	S90
Staggered rotated 60	S60
Square Pattern rotated 45	S45
Staggered rotated 30	S30

### Example:



# PATTERN CONFIGURATIONS & DESIGN PARAMETERS

All perforated aluminium screens and samples are manufactured to order.

Many variations of these patterns can be created by playing with the hole size, rotation, and open area of the pattern.

**Please note:** Minimum punch size must be at least 2 x the material thickness.

### Economical Design:

To ensure the most economical design with minimal wastage, it is best to work with standard aluminium sheet sizes.

### Standard 3mm aluminium sheets:

3.00 X 1200 X 2400      3.00 X 1500 X 3000  
3.00 X 1500 X 2400      3.00 X 1200 X 3600  
3.00 X 1200 X 3000      3.00 X 1500 X 3600  
(Larger sheets available POA)

### Unperforated borders:

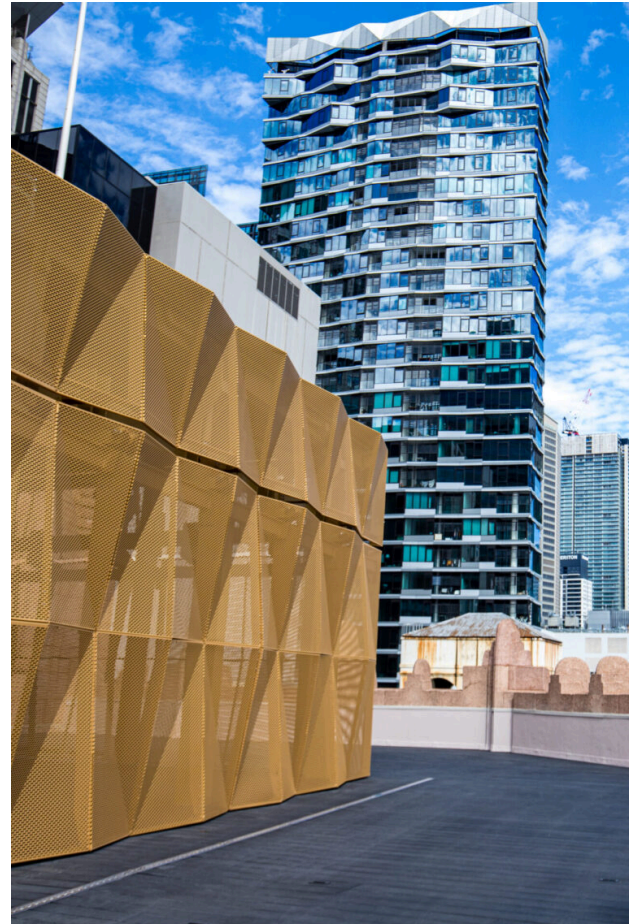
Please allow a 15mm minimum unperforated border to be specified, depending on the required folds to suit the design intent.

### Aluminium Perforated Screen Weight:

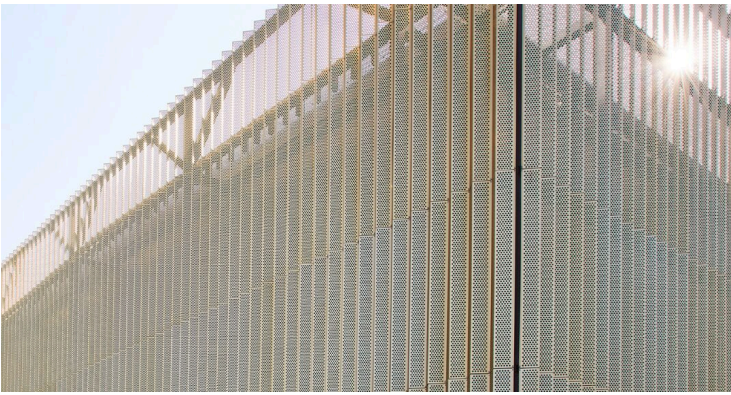
= (Length X Width X Thickness X Density) – Open area

Example: (A sheet of 2400 X 1200 X 3mm thick aluminium X 2.71 density of aluminium) – 41% = 13.8kg

**Please note:** This formula calculates an approximate weight and should be used as a guide only.







# Case Study

## Westconnex

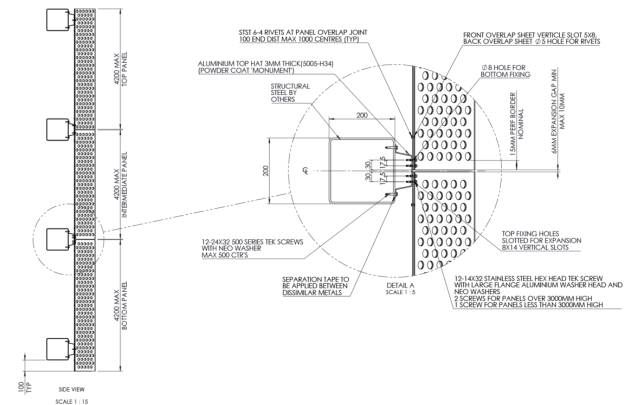
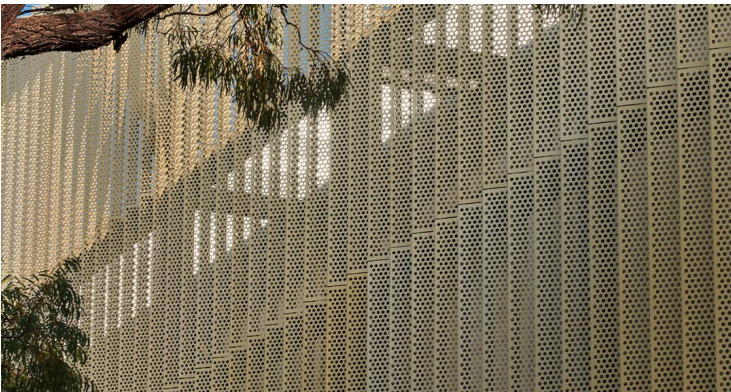
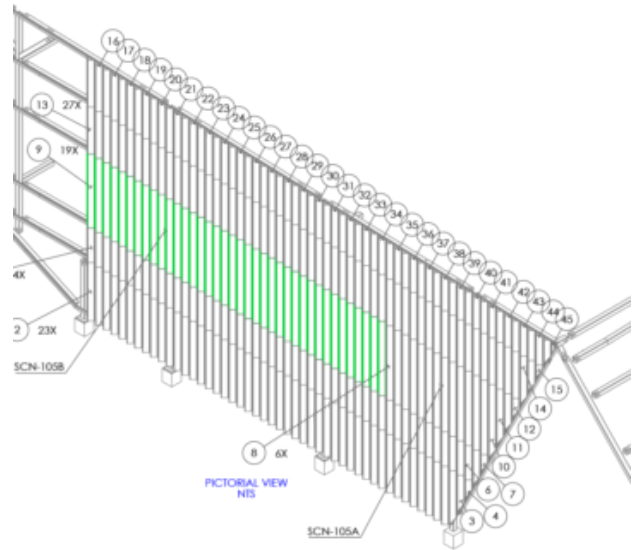
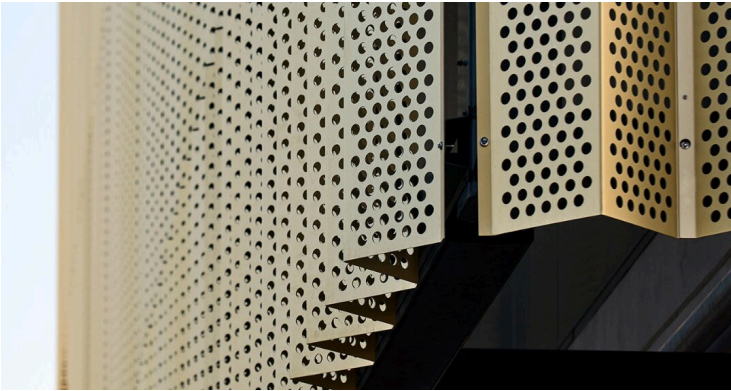
Louvreclad Polaris Series® bespoke folded perforated aluminium screen.

A stunning perforated metal façade that includes 2480m<sup>2</sup> and 1219 panels of perforated aluminium Polaris Series® screens, all designed, engineered, and manufactured by Louvreclad in-house. Louvreclad's ability to produce these panels in-house ensured efficient quality-controlled manufacturing and shorter lead times that met the project requirements.

Once shipped to site, our experienced project team maintained efficiencies by utilising specialist machinery that allowed for 6-8 panels to be installed at one time.

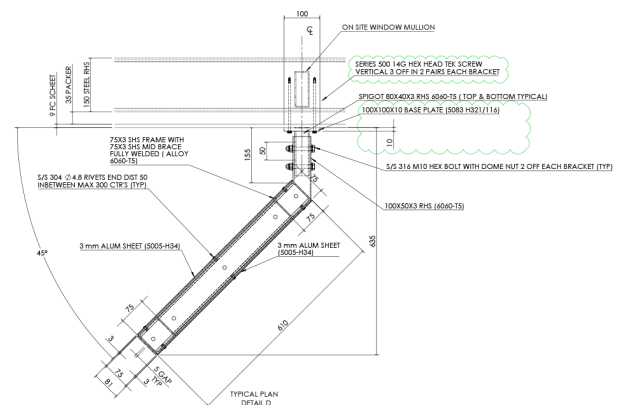
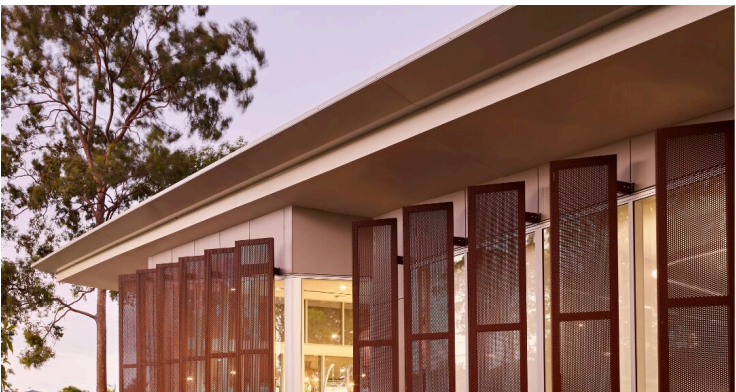
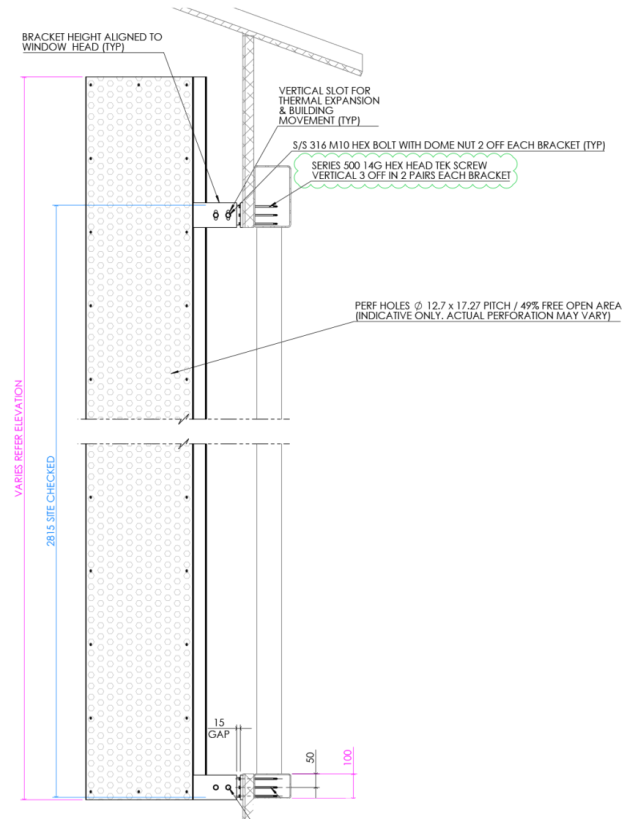
Polaris Code: POL-RO-25-30-ST

Green area highlighted below: POL-RO-25-50-ST



## A close-up, low-angle shot of a modern building's exterior. The image shows a dark, perforated metal facade with a repeating pattern of small, triangular holes. To the right, a light-colored, textured wall is visible. The building's structure is composed of dark, angular elements. In the background, green foliage and a clear blue sky are visible.

Polaris Code: POL-RO-12-50-ST and POL-TR-18-ST







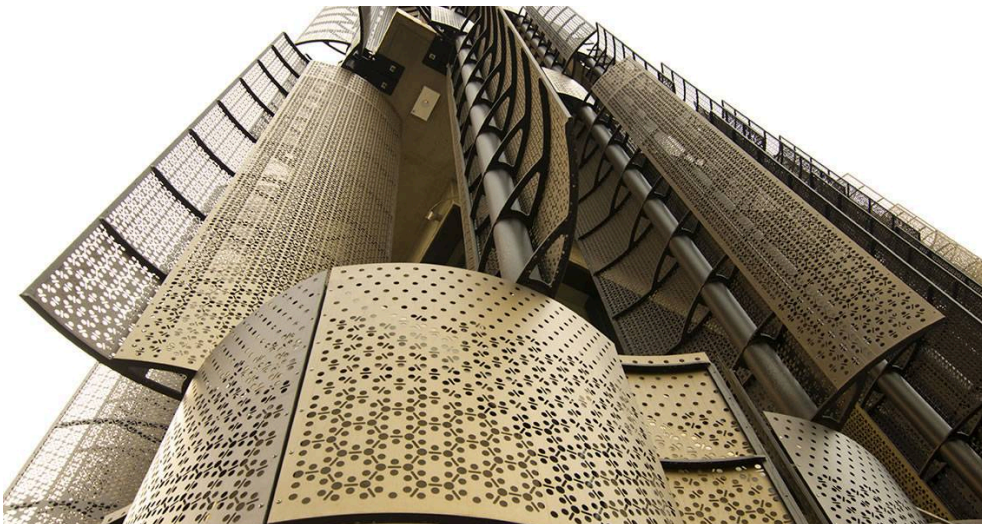
## Inspire with Quality

As leaders in the building envelope market, we are known for exceptional quality and lasting value. Our credibility, wealth of knowledge, and unmatched competence enable us to inspire exterior solutions that look good and perform better.



## The MadeRight Guarantee

Following our proven process enables us to develop solutions we're proud to put our mark of quality to. We guarantee that all projects will be delivered in a timely manner, be on specification, engineered to Australian standards and finished to the highest quality.



## Made to Perform

Louvreclad solutions are made to last and manufactured on-site using high-quality Australian aluminium and steel. As an organisation we are driven to get a thousand things right everyday to achieve our vision to be the face of Australian Building. Our facades are not here to be average, they are here to perform – and so are we.

# Speak to an expert

Reach out today to discuss your facade solution requirements; we would love to hear from you.



Made to Perform

1300 165 678

[sales@louvrecld.com](mailto:sales@louvrecld.com)

[louvrecld.com](http://louvrecld.com)