

# Elliptical Blades

Louvreclad elliptical blades are ideal for vertical, horizontal, or awning installations, offering a refined linear aesthetic and effective solar shading.

## Features

### AESTHETICS

#### Slim-Line Elliptical Design

A wide range of elliptical profiles offers a refined, linear aesthetic, perfect for modern architectural facades.

### DESIGN

#### Versatile Installation

Suitable for fixed or operable vertical, horizontal configurations. Adaptable for window awnings and pergola shading.

### INNOVATION

#### Controlled Solar Shading

Variable blade pitch and angle allow precise control of sunlight, enhancing energy efficiency and comfort.

## Specifications

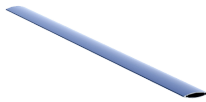
### INSTALLATION

Installation and mounting details will be designed in accordance with proprietary systems and recommendations as designed and manufactured by Louvreclad.

# Explore the profile options

## Bremer Series®

45x11mm aluminium  
elliptical blades



45 mm  
DEPTH

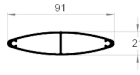
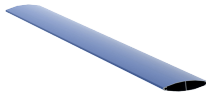
11 mm  
THICKNESS

1075 mm  
MAX SPAN

0.4 kg/metre  
WEIGHT

## Windsor Series®

91x21mm aluminium  
elliptical blades



91 mm  
DEPTH

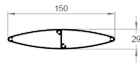
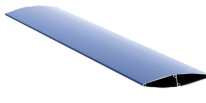
21 mm  
THICKNESS

2400 mm  
MAX SPAN

0.88 kg/metre  
WEIGHT

## Oxford Series®

150x29mm aluminium  
elliptical blades



150 mm  
DEPTH

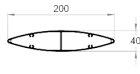
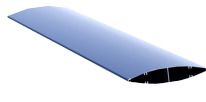
29 mm  
THICKNESS

2350 mm  
MAX SPAN

1.56 kg/metre  
WEIGHT

## Wickham Series®

200x40mm aluminium  
elliptical blades



200 mm  
DEPTH

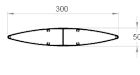
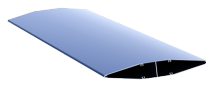
40 mm  
THICKNESS

3200 mm  
MAX SPAN

2.96 kg/metre  
WEIGHT

## Ocean Series®

300x50mm aluminium  
elliptical blades



300 mm  
DEPTH

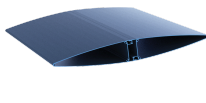
50 mm  
THICKNESS

3800 mm  
MAX SPAN

4.74 kg/metre  
WEIGHT

## Merlin Series®

430x55mm aluminium  
elliptical blades



430 mm  
DEPTH

55 mm  
THICKNESS

4100 mm  
MAX SPAN

3.49 kg/metre  
WEIGHT



# Elliptical Blades

## Technical Data Disclaimer

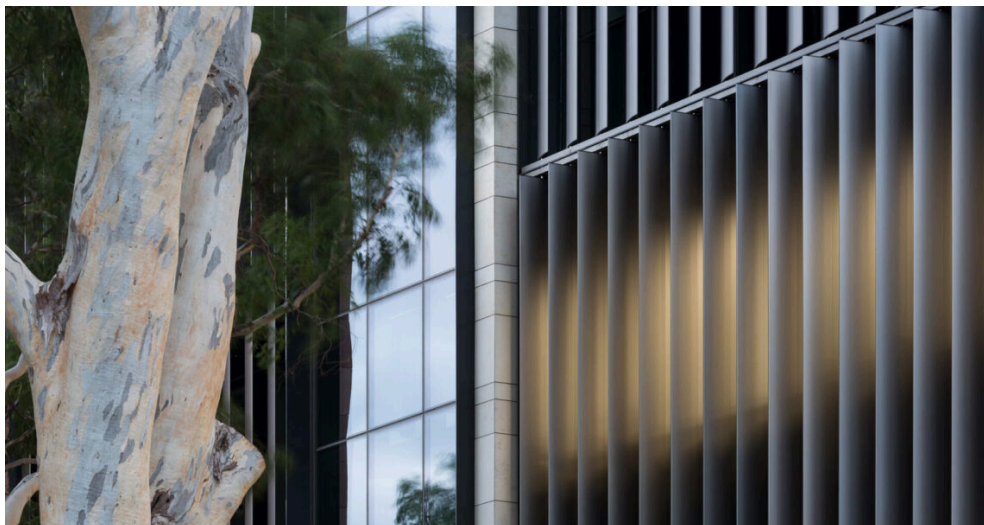
- Indicative maximum span provided are based on generic permissible design wind pressure of 2kPa.
- Span values and product technical information provided are subjected to variance by project specific requirements & influence factors such building location, terrain category & local pressure effects.
- Span values provided are based on typical scenario where product specified are fixed at one end; simply supported at the other end and in either horizontal or vertical orientation.
- If the product specified is required to function as barrier for fall protection or as trafficable element, maximum span and pitch nominated may be reduced.
- Spans values provided could be influenced and reduced when used in dynamically sensitive wind environment.
- For project specific product selection or preliminary design & engineering consultation, please contact 1300 165 678 or [sales@louvreclad.com](mailto:sales@louvreclad.com) to arrange or book a meeting.





## Inspire with Quality

As leaders in the building envelope market, we are known for exceptional quality and lasting value. Our credibility, wealth of knowledge, and unmatched competence enable us to inspire exterior solutions that look good and perform better.



## The MadeRight Guarantee

Following our proven process enables us to develop solutions we're proud to put our mark of quality to. We guarantee that all projects will be delivered in a timely manner, be on specification, engineered to Australian standards and finished to the highest quality.



## Made to Perform

Louvreclad solutions are made to last and manufactured on-site using high-quality Australian aluminium and steel. As an organisation we are driven to get a thousand things right everyday to achieve our vision to be the face of Australian Building. Our facades are not here to be average, they are here to perform – and so are we.

# Speak to an expert

Reach out today to discuss your facade solution requirements; we would love to hear from you.



Made to Perform

1300 165 678

[sales@louvreciad.com](mailto:sales@louvreciad.com)

[louvreciad.com](http://louvreciad.com)